



Use of Zebra ZD421t printer



United Nations
Educational, Scientific and
Cultural Organization

Regional Centre for
Library Information Systems and
Current Research Information Systems
Regionalni center za knjižnične
informatijske sisteme in informatijske
sisteme o raziskovalni dejavnosti



© IZUM, 2024

IZUM, COBISS, COMARC, COBIB, COLIB, CONOR, SICRIS, E-CRIS, COBISS3, mCOBISS, COBISS+, dCOBISS, COBISS4, SGC, COBISS Lib, COBISS Cat, COBISS Ela are registered trademarks owned by IZUM.

CONTENTS

- 1 Introduction 1
- 2 Setup 1
- 3 Driver installation 2
- 4 Setup in the COBISS Lib application..... 5
- 5 Troubleshooting..... 9

FIGURES

- Figure 1: ZD421 printer 1
- Figure 2: Control panel, devices and printers2
- Figure 3: Printer properties2
- Figure 4: Printing Defaults3
- Figure 5: Page setup3
- Figure 6: Print options4
- Figure 7: Graphic options.....4
- Figure 8: Control panel and printing preferences.....5
- Figure 9: COBISS Lib user interface5
- Figure 10: COBISS Lib user interface and logical destinations6
- Figure 11: Logical destination editor6
- Figure 12: Logical destinations setup.....7
- Figure 13: Details8
- Figure 14: Refresh settings in the COBISS Lib user interface8
- Figure 15: Logical destinations editor for member labels.....9
- Figure 16: Printing a test page.....9
- Figure 17: Calibrating the medium 10

1 Introduction

The document contains the instructions for the use of the ZD421 printer in the COBISS system. There are several versions of the ZD421 printer, so you have to pay special attention as there is only one designation on the case. There are three versions: ZD421c, ZD421d and ZD421t. All three versions, namely version C (Changing Media), T (Thermal Transfer) and D (Direct Transfer) are different. The main difference is that version T uses a classic ribbon and version C uses a cartridge. It is recommended not to get the cartridge model as the cartridges are expensive to replace. This is why we suggest to order the model **ZD421t (Thermal Transfer)**.



Figure 1: ZD421 printer

2 Setup

We recommend that a technically skilled person performs the initial installation of the printer.

When setting up and installing the printer, follow the instructions available on the Zebra manufacturer's official website (<https://www.zebra.com/us/en/support-downloads/printers/desktop/zd421.html>).

In order to facilitate the use of the printer, the following video instructions are available:

- description of the printer functionalities,
- setting up and installing the printer,
- loading the black ribbon,
- installing the label dispenser module,
- calibrating for suitable label format, and
- cleaning the printhead.

The required ZDesigner drivers and manuals with detailed instructions for using the printer are also available on the website.

3 Driver installation

Once the driver is installed, the settings have to be adjusted before you start printing labels. This can be done in the **Control Panel**, where you select **Devices and Printers**. All the available printers will be shown on-screen. Select the *ZDesigner ZD421-203dpi ZPL* printer and right-click it. Select **Printer properties** from the options (see Figure 2).

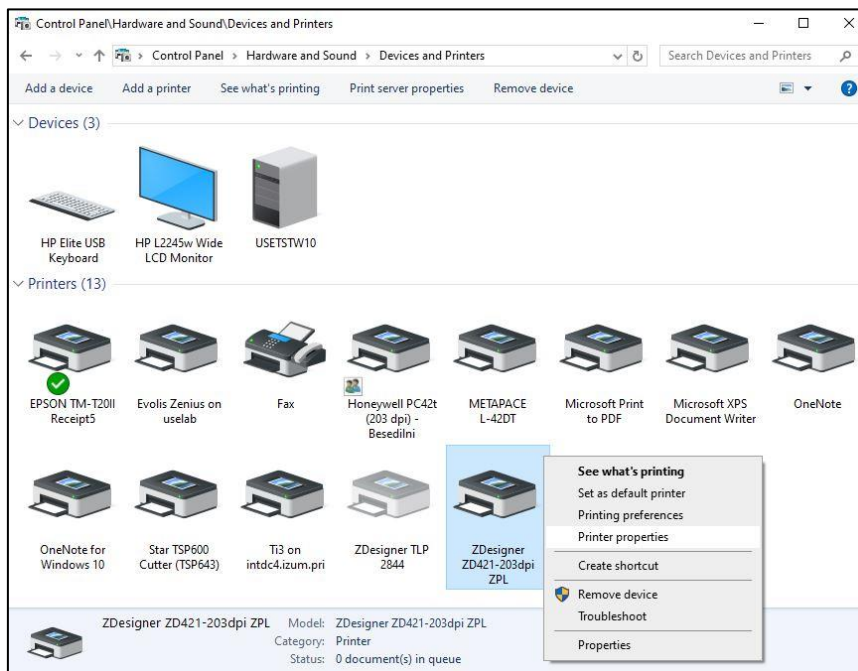


Figure 2: Control panel, devices and printers

Once you click **Printer properties**, a new window will be displayed, where you select the **Advanced** tab (see Figure 3).

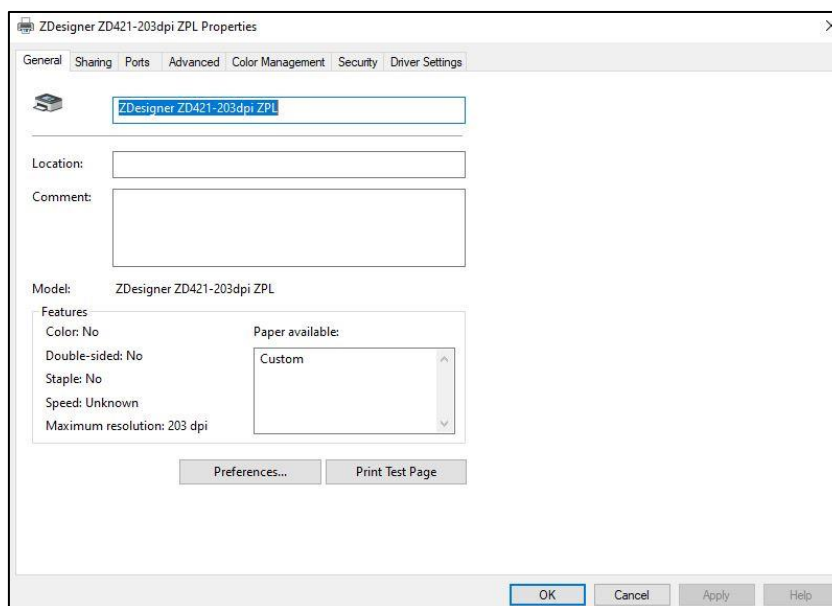


Figure 3: Printer properties

In the **Advanced** tab, select the option **Printing Defaults...**

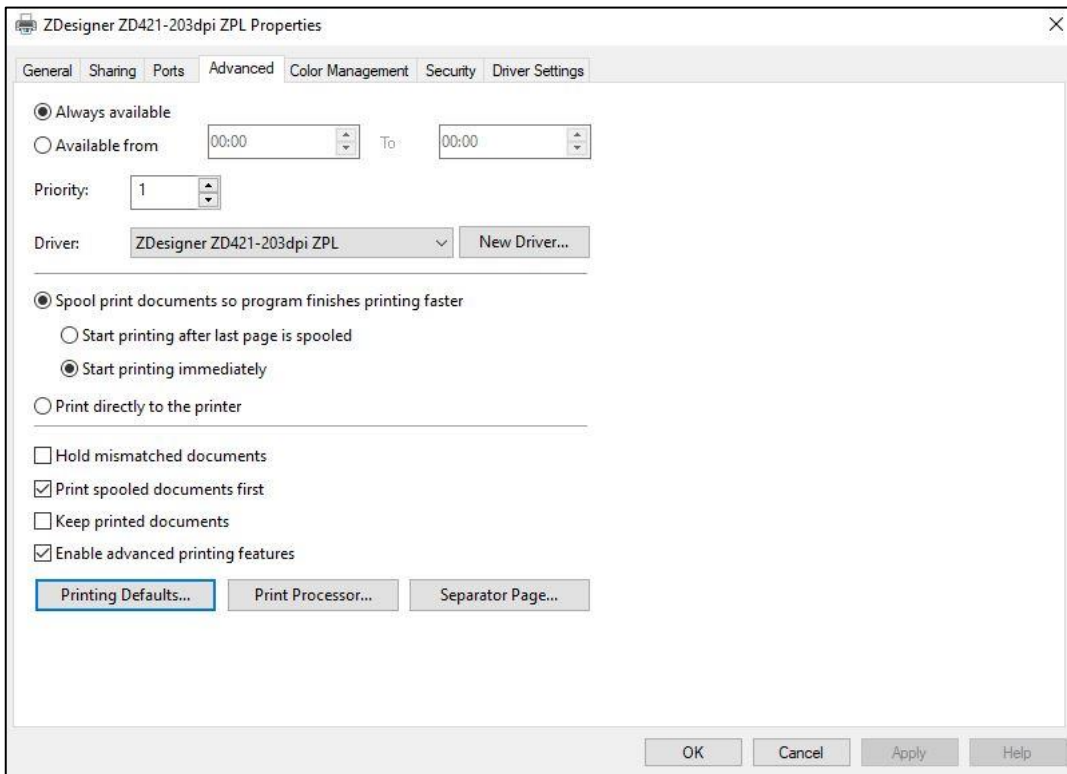


Figure 4: Printing Defaults

In the fields indicated in yellow, enter the width and height of the medium and/or label you use.

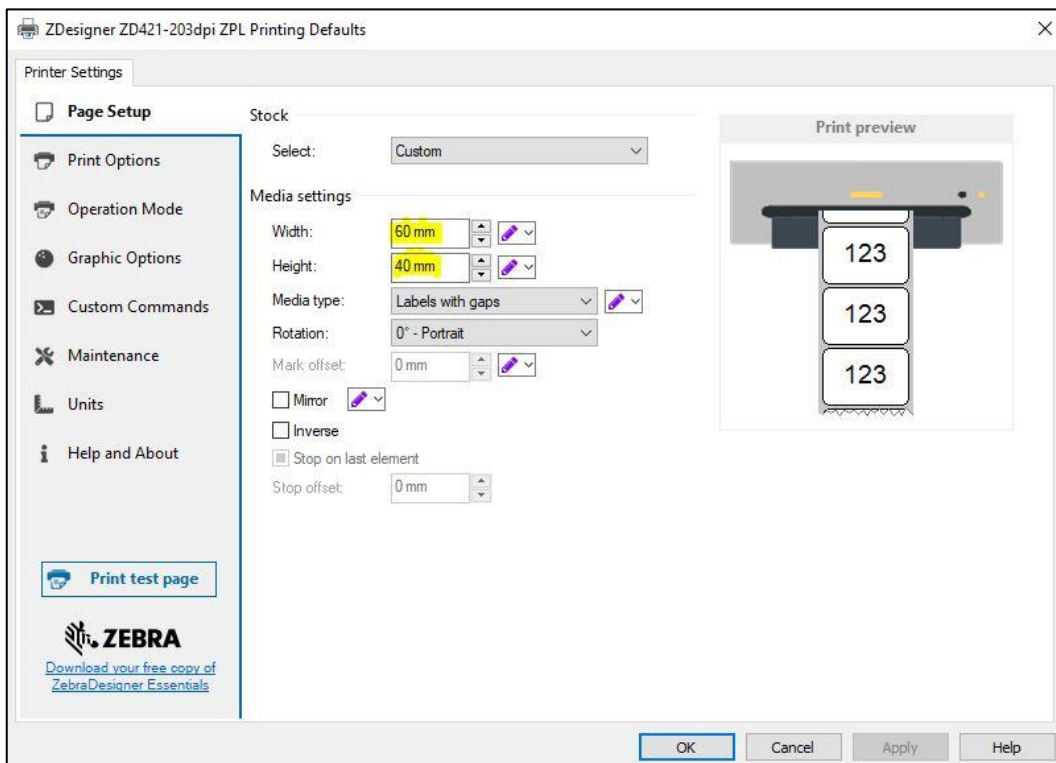


Figure 5: Page setup

Once you finish the **Page Setup**, select **Print Options** and adjust the speed, temperature and printing mode (see Figure 6).

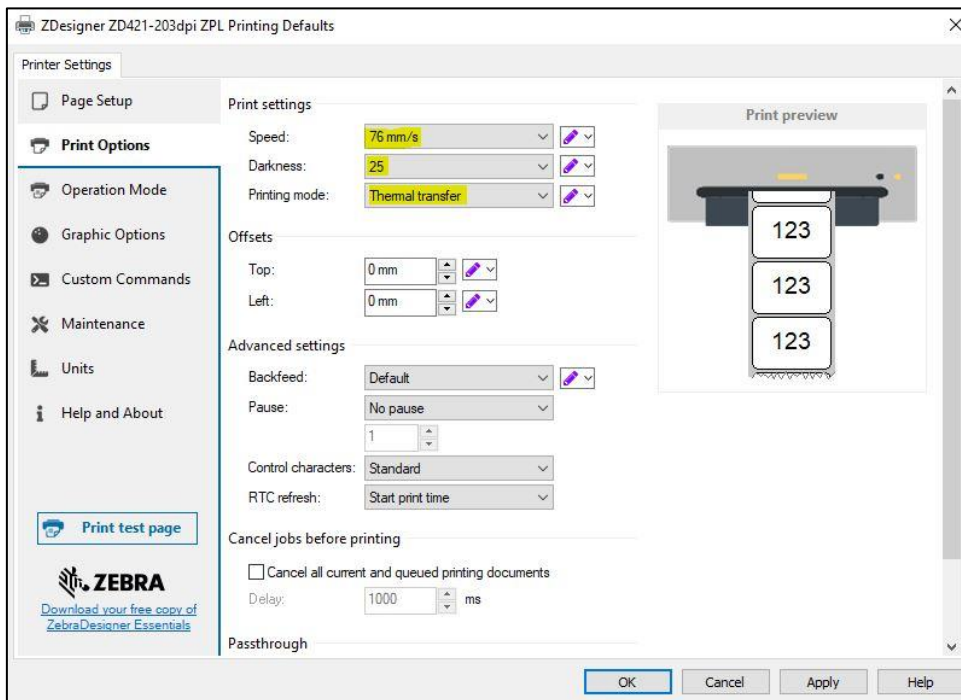


Figure 6: Print options

Finally, check the **Graphic options**, where the slider under **Dithering** should be set to *Clipart* (see Figure 7).

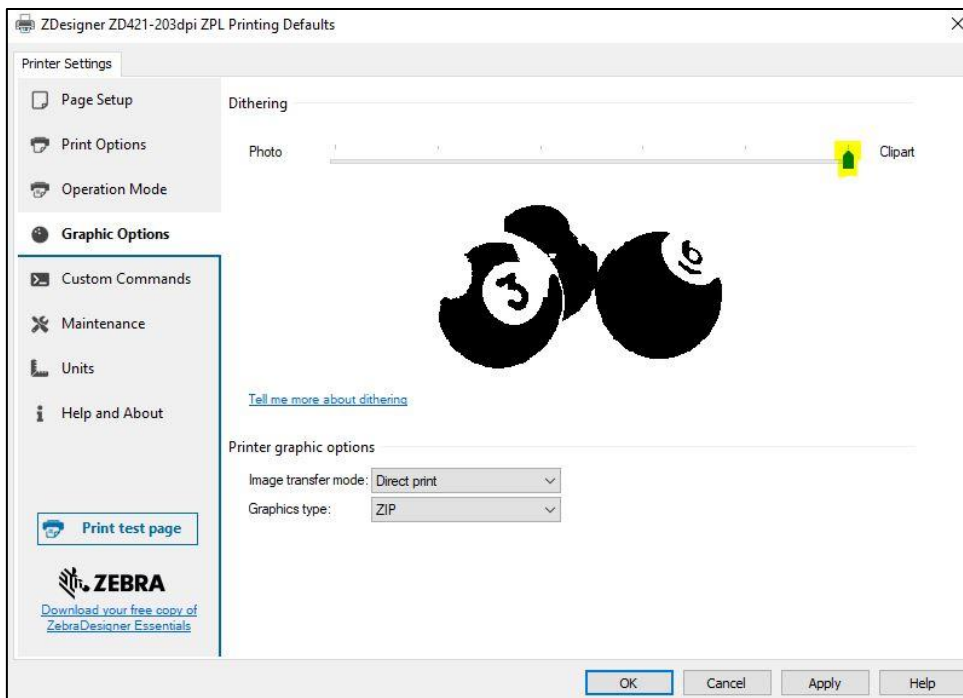


Figure 7: Graphic options

It is recommended to use the same settings for the **Printing preferences** option.

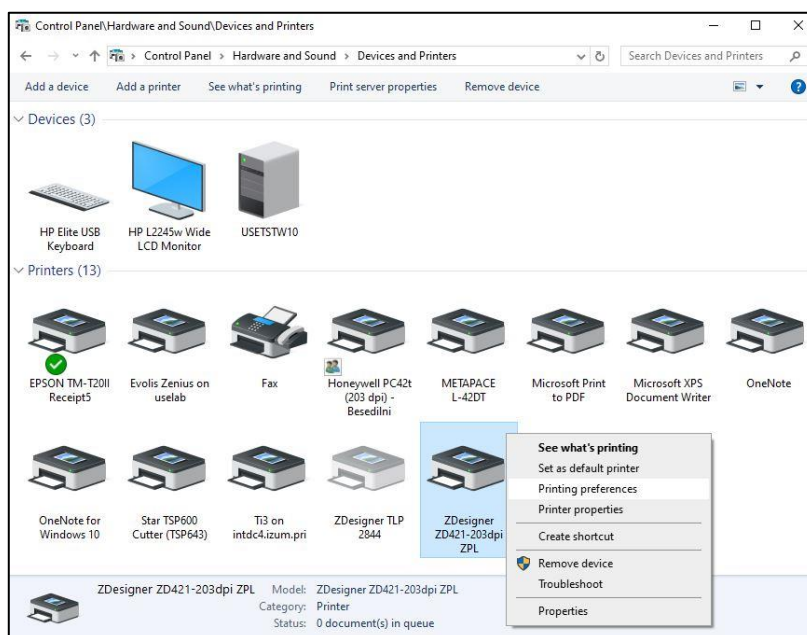


Figure 8: Control panel and printing preferences

4 Setup in the COBISS Lib application

To use the printers in COBISS Lib, the COBISS DGW service must be installed beforehand. https://www.cobiss.net/doc/Namescanje_COBISS_DGW_EN.pdf

To check if the installation was successful, you can use the **Settings and administration / Server / Test connection with COBISS DGW** method in COBISS Lib. The message *COBISS DGW is connected!* means that the installation was successful and that you can continue adding printers to the logical destinations (see Figure 9).

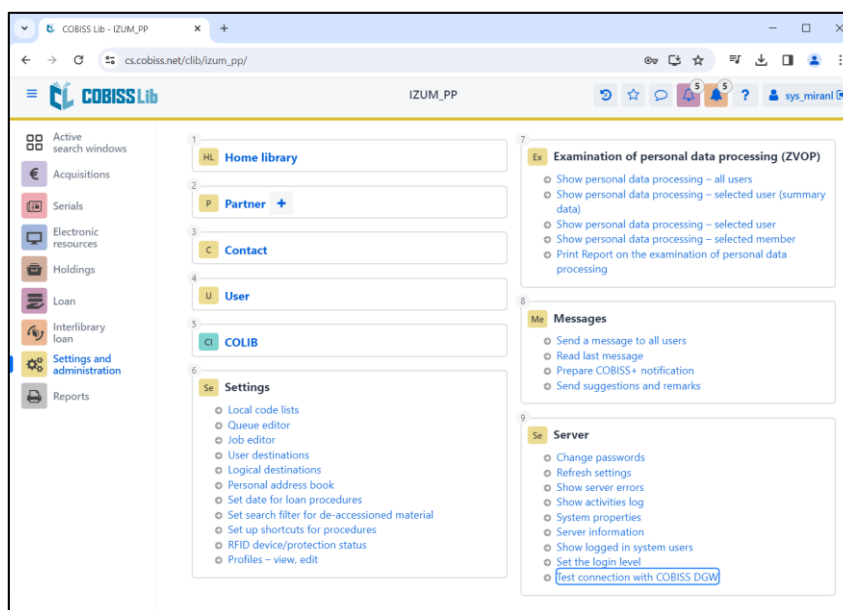


Figure 9: COBISS Lib user interface

In COBISS Lib select **Settings and administration / Settings / Logical destinations** (see Figure 10).

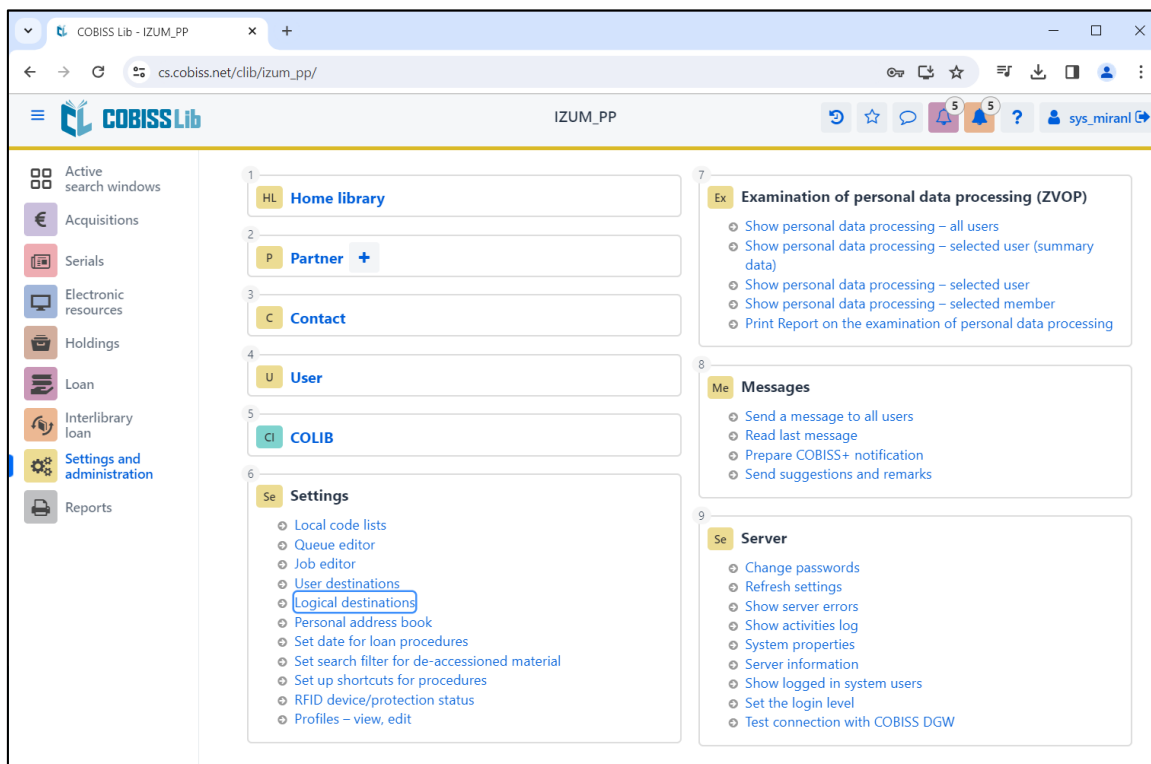


Figure 10: COBISS Lib user interface and logical destinations

The **Logical destinations editor** window will open where you select the option *Label – material: [default local printer]* and click **Edit** (see Figure 11).

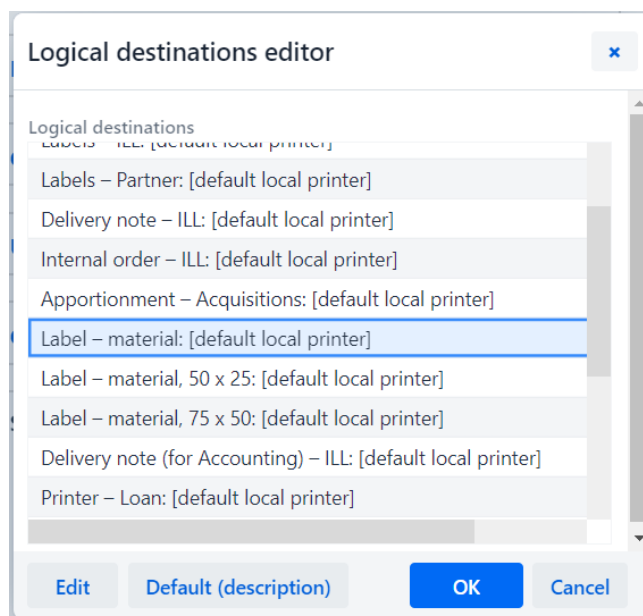


Figure 11: Logical destination editor

The **User destinations** windows will open, where you click the **Add printer** button. From the drop-down list, select the printer *ZDesigner ZD421-203dpi ZPL*, with which you intend to print the labels for the material (see Figure 12).

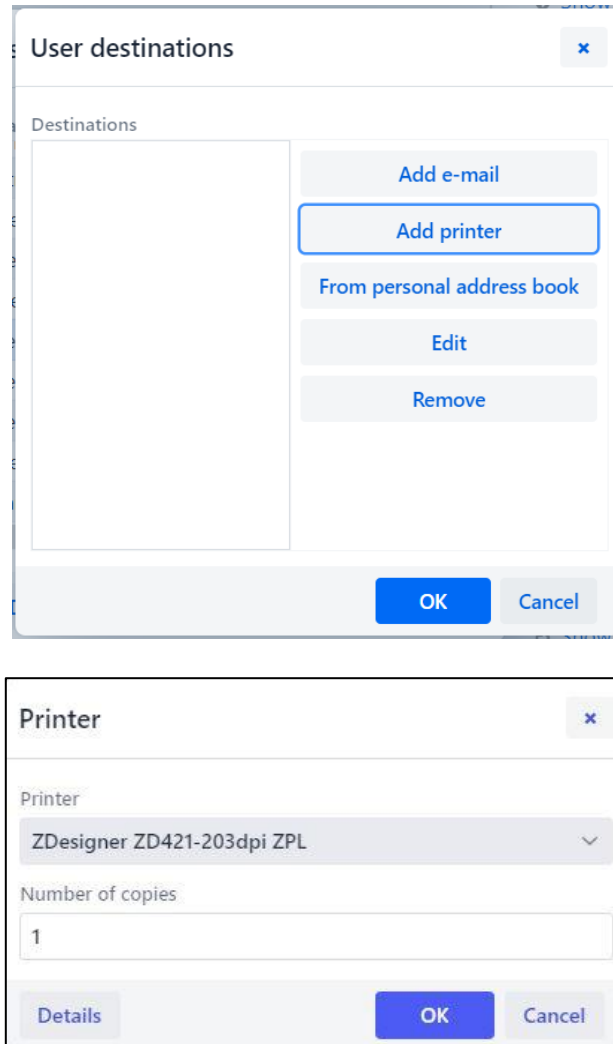


Figure 12: Logical destinations setup

Once you select the printer, click the **Details** button and check whether the additional settings for this printer type are correct (see Figure 13).

The 'Details' dialog box contains the following settings:

- Printing mode: graphics
- Printer type: (empty dropdown)
- Printer subtype: (empty dropdown)
- Printing style: single sided
- Orientation: portrait

Buttons: OK, Cancel

Figure 13: Details

Once you define all the settings, confirm each choice by clicking the **OK** button. At the end, select **Refresh settings** in the **Settings** (see Figure 14). If this option is not available, you can refresh the new settings by signing out and back into the COBISS Lib software.

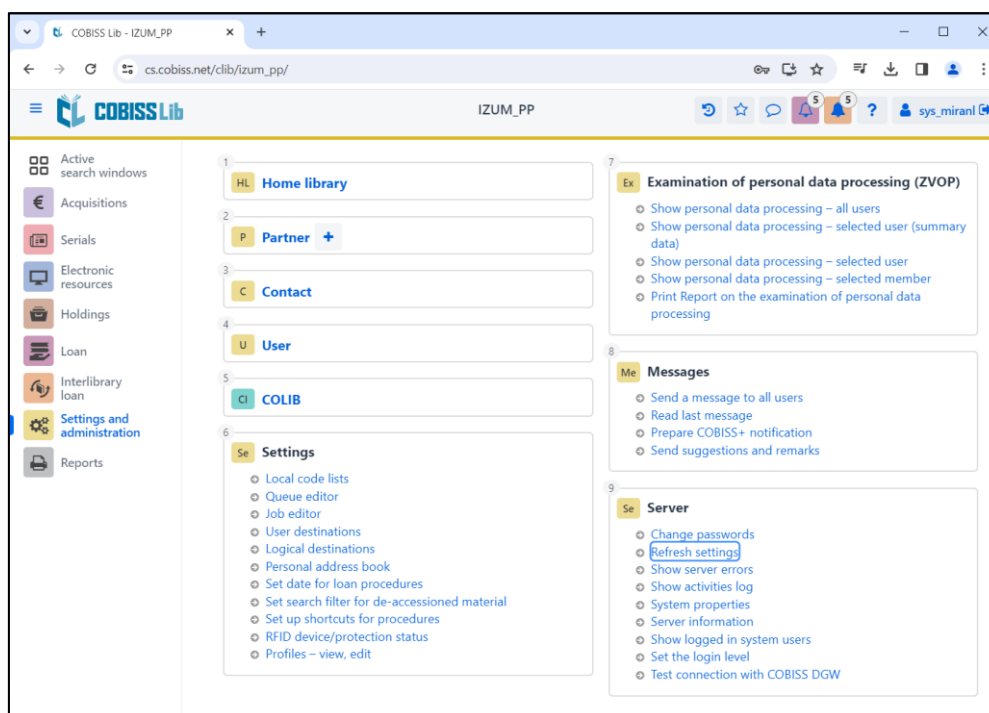


Figure 14: Refresh settings in the COBISS Lib user interface

Now you can start printing labels for the material.

If you wish to use the same printer to print labels for members, the process remains identical to the one described in the previous steps. The only difference is setting the logical destination to *Label – Loan (member)* (see Figure 15).

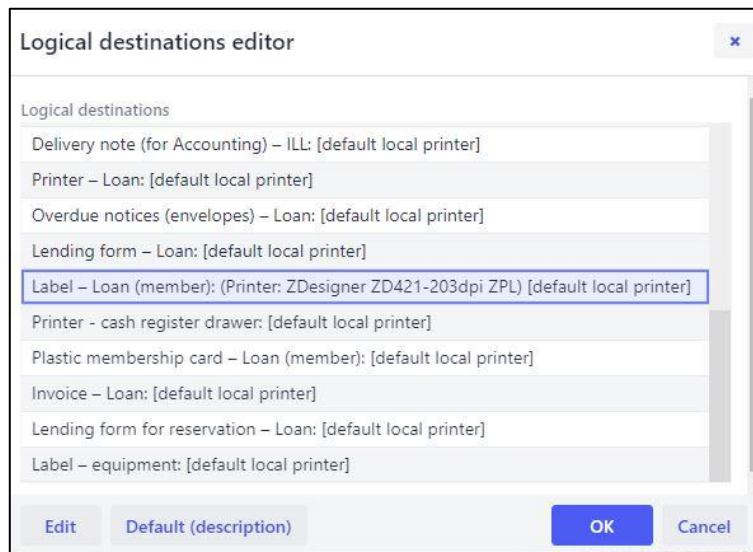


Figure 15: Logical destinations editor for member labels

5 Troubleshooting

If, after installing the drivers and setting the logical destinations, printing labels does not work correctly, firstly check whether the printer responds to the operation system on which it is installed. In **Control Panel** select **Devices and Printers**. All available printers will be displayed on-screen. Select printer *ZDesigner ZD421-203dpi ZPL* and right-click it. From the options, select **Printing preferences**. A new window will open, where you select **Print test page** in the bottom left corner (see Figure 16).

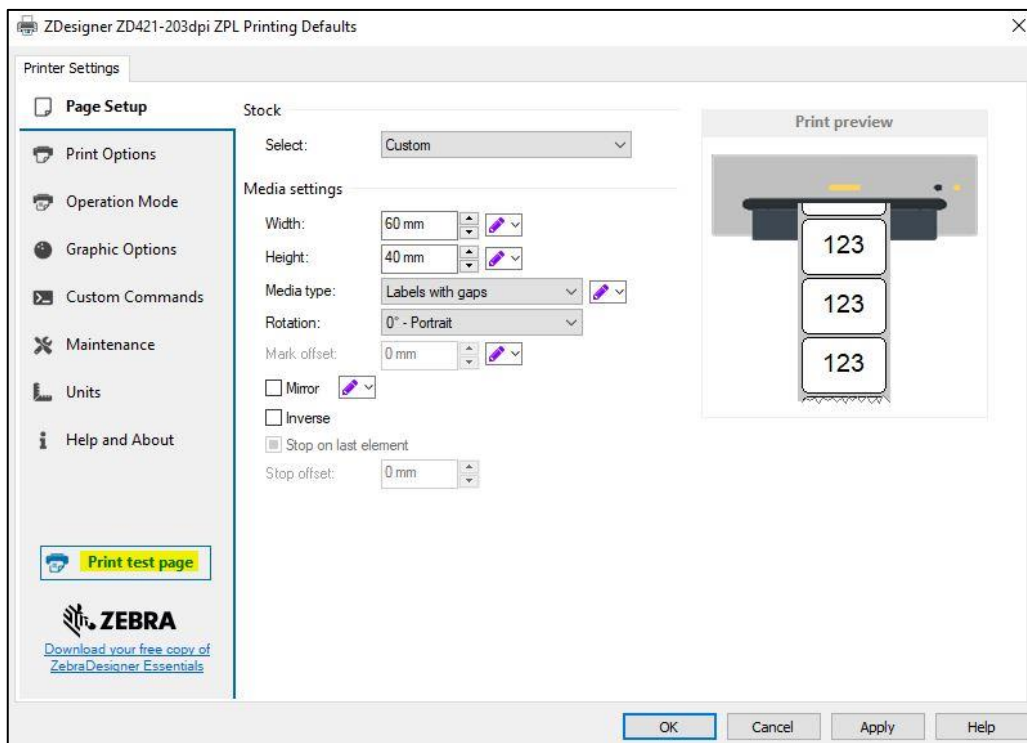


Figure 16: Printing a test page

If the printer is installed correctly, a sample label will be printed.

If, when printing, there is a shift in the contents of the label, we advise to carry out medium calibration via printer drivers. In this procedure, the printer automatically adjusts the medium and the sensor to the label's dimensions. You can start the process by clicking the button *Calibrate* in the **Maintenance** tab (see Figure 17).

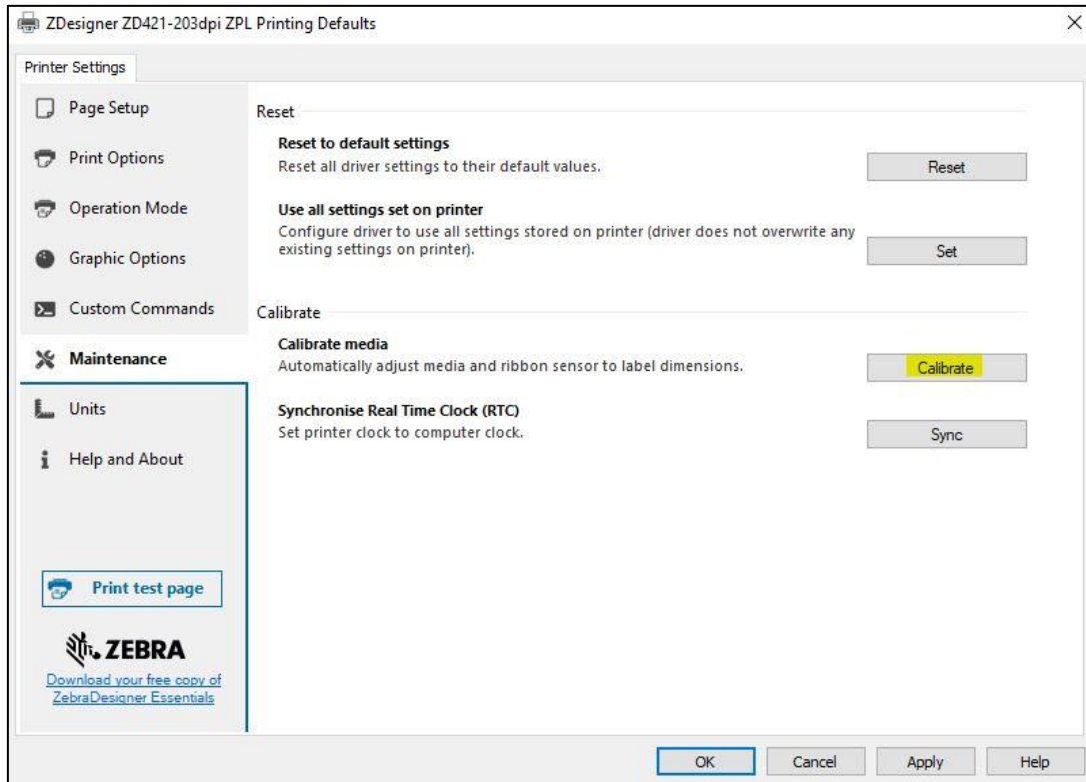


Figure 17: Calibrating the medium

The printer uses three blank labels during the calibration process. After the calibration process is complete, try printing the label again.